

**ANNUAL MS4 STORMWATER
MANAGEMENT PLAN
REPORT – 2013**



OKLAHOMA COUNTY

Prepared February 2014



Oklahoma County Phase II Separate Storm Sewer System Annual Report

Permittee Name: Oklahoma County
Department: Oklahoma County Planning and Engineering Department
Focus Area: Unincorporated Oklahoma County
Mailing Address: 320 Robert S. Kerr, Suite 101 Oklahoma City, OK 73102
Contact Person: Erik Brandt – County Planner
Email Address: eneribra@oklahomacounty.org
Telephone #: (405) 713-7146
Reporting Period: Dec. 2012 – Dec. 2013
Authorization #: OKR040016

TABLE OF CONTENTS

PROPOSED CHANGES TO BMPS	3
CERTIFICATION STATEMENT	3
EXECUTIVE SUMMARY	4
MINIMUM CONTROL MEASURE 1 – PUBLIC EDUCATION AND OUTREACH	5-6
MINIMUM CONTROL MEASURE 2 – PUBLIC INVOLMENT/PARTICIPATION	6-7
MINIMUM CONTROL MEASURE 3 – ILLICIT DISCHARGE & ELIMINATION	7-8
MINIMUM CONTROL MEASURE 4 – CONSTRUCTION SITE STORM WATER CONTROL	8-10
MINIMUM CONTROL MEASURE 5 – POST CONSTRUCTION STORM WATER MANAGEMENT	10
MINIMUM CONTROL MEASURE 6 – POLLUTION PREVENTION AND GOOD HOUSEKEEPING	10-11
FUTURE ACTIVITIES	11-12

Executive Summary

Stormwater Management Annual Report

Executive Summary:

This annual report has been prepared in compliance with the Oklahoma Department of Environmental Quality's permitting requirements for small municipal separate storm sewer systems (MS4s). Oklahoma County has been designated a MS4 based on population in the urbanized areas in the unincorporated portions of Oklahoma County. Under Phase II requirements MS4's must apply for a general permit in order to be authorized to discharge stormwater into "waters of the United States". The permit requires MS4's to develop, implement, and enforce a stormwater management program designed to reduce the discharge of pollutants to the maximum extent practicable. Municipalities, counties, and state entities have five years to achieve complete implementation of the program, but each year they must show incremental progress towards accomplishing that goal. To monitor progress of the stormwater management program, the ODEQ requires all entities to conduct an annual evaluation and submit the results in the form of an annual report. This document has been prepared to satisfy this requirement.

Oklahoma Department of Environmental Quality conducted a Phase II Screening Evaluation in February 2010. ODEQ conducted an audit of the previous five years of implementation of Oklahoma County's Stormwater Management Plan. ODEQ found that Oklahoma County is in substantial compliance with the current permit, and no deficiencies were identified during the audit. Oklahoma County has continued with the implementation of its plan and awaits guidance from ODEQ once the general permit is reauthorized. Oklahoma County will modify its plan to comply with the new general permit and possibly the new expanded urbanized area.

MINIMUM CONTROL MEASURE 1 PUBLIC EDUCATION AND OUTREACH

Stormwater Website

Status: **Ongoing**

Oklahoma County will try to add stormwater information to its website in the future. We would include information about the County's program which includes brochures, Oklahoma County Stormwater Map, and information about current stormwater activity in Oklahoma County.

Brochures

Status: **Complete**

Oklahoma County has two brochures that we utilize to inform the general public about Oklahoma County's program and how they can help reduce pollution through stormwater runoff. We utilize EPA's "After the Storm" brochure and Oklahoma County has created its own brochure to inform citizens about the issues of stormwater runoff and how they can be of assistance.

Information for 2013

Oklahoma County contacted the Oklahoma County Conservation district after the stormwater conference that was held at the Oklahoma City zoo in November of 2012. Staff spoke with Becky Inmon, Oklahoma County Conservation staff; she stated that they do educational outreach activities with the Deer Creek School district. Ms. Inmon allowed County staff to attend the one day educational activity with fourth graders and how stormwater effects the environment. This year's activity took place on October 4, 2013, from 1:00 pm. to 3:00 pm. Staff observed 90 fourth graders have the opportunity to visit 4 different stations to get a better understanding of stormwater runoff and how it can affect the natural environment.

Oklahoma County staff handed out 90 household hazardous fact sheets informing citizens of unincorporated Oklahoma County about the County's agreement with Midwest City and the ability to recycle household hazardous waste. Oklahoma County's goal at this event was to inform citizens about the recycling of household hazardous waste at Midwest City and what items were accepted at Midwest City's facility.

Future Plans for Public Education

Oklahoma County is currently considering a quarterly or biannual newsletter that would be sent to subdivisions in unincorporated Oklahoma County. The newsletters would provide information about household hazardous waste and where Oklahoma County

citizens can drop off their household hazardous waste. Due to budgetary constraints, Oklahoma County has put the newsletter on hold at this time.

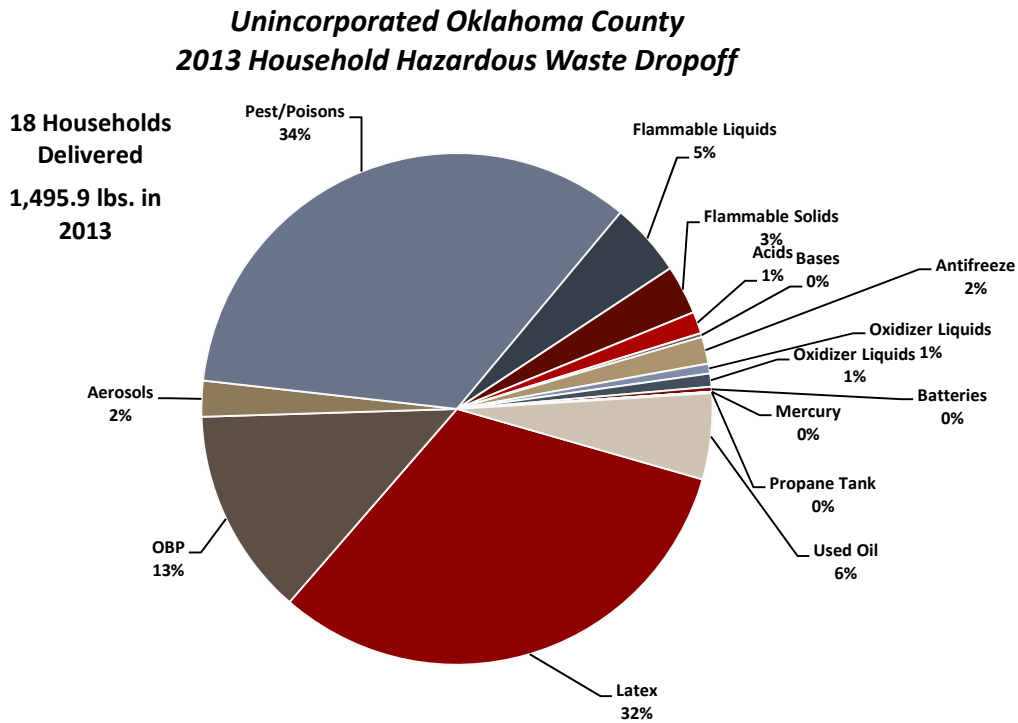
Oklahoma County is also looking into adding a webpage to get out information about the County's program. Oklahoma County is still looking into these avenues to distribute information. The budget situation has not improved and we will have to wait until the second quarter of 2014 to see if the situation improves.

MINIMUM CONTROL MEASURE 2 PUBLIC INVOLEMENT AND PARTICIPATION

Household Hazardous Waste Collection

Status: **Complete**

Oklahoma County has been working with Midwest City and other communities before the MS4 program was initiated under the umbrella of COMEA. COMEA disbanded in 2007 and now Oklahoma County is partnering with Midwest City so residents of unincorporated Oklahoma County can dispose of household hazardous waste at their facility. In 2010, Oklahoma County residents dropped off 1,140 pounds of household hazardous waste. In 2011, Oklahoma County residents dropped off 1,022 pounds of household hazardous waste. In 2012, Oklahoma County residents dropped off 953.8 pounds of household hazardous waste. In 2013, Oklahoma County residents dropped off 1,495.9 pounds of household hazardous waste. The pie chart below is a breakdown of the type of waste that was dropped off at the Midwest City facility for 2013.



Brochure

Status: **Complete**

Oklahoma County has created a brochure to explain to the general public household hazardous waste, non-point source pollution, and the importance of proper disposal of these wastes. Oklahoma County distributes this pamphlet with building permits. The brochure is also displayed at the county planning and engineering office for the general public to consume.

MINIMUM CONTROL MEASURE 3 - ILLICIT DISCHARGE DETECTION & ELIMINATION

MAPPING OF THE MS4

Status: **Complete**

Oklahoma County hired C.H. Guernsey & Company to collect GPS data that depicts Oklahoma County's dry weather screening points that can also be used as possible monitoring points in the future. Oklahoma County and C.H. Guernsey also took pictures at these dry weather screening points for our records. Oklahoma County has created a map showing these locations and is available upon request. Oklahoma County will continue to dry weather screen these points in the future and will take photographs for documentation purposes. There are a total of 24 dry weather screening/monitoring points in unincorporated Oklahoma County.

In 2011, Oklahoma County inspected 11 dry weather screening/monitoring points in northwest and central Oklahoma County. Oklahoma County created and utilized a dry weather screening form and took pictures of these sites for documentation purposes. The two sites that were inspected in central Oklahoma County were in good condition with no issues at the time of inspection. The nine sites in northwest Oklahoma County were in good condition, except for three locations. At these three locations we encountered a dishwasher, steel fencing, tire, car bumper, sink, and a large amount of wood fencing. Oklahoma County contacted Oklahoma City and the superintendent for Oklahoma County District Three to assist us in the clean up of these locations and the removal of the above mentioned debris. All waste was removed.

Oklahoma County will continue with the inspection of these dry weather screening/monitoring points in 2014 and inspect the remaining 13. If any issues arise or debris found, we will follow up with local jurisdictions and county staff to resolve these issue(s).

STORMWATER REGULATION

Status: **Complete**

C.H. Guernsey & Company was employed by Oklahoma County to assist in the creation of Oklahoma County's Stormwater Regulation. The stormwater regulation was approved by the Board of County Commissioners in August 2009. A few months before the approval of the Stormwater Regulation Oklahoma County had been attempting to

change state statutes in order to have the capability to write citations for zoning violations, building code violations, and stormwater violations. That measure has been approved.

Oklahoma County had 5 stormwater violations in 2011. All violations were resolved without issuing citations. Oklahoma County did not issue any stormwater violations in 2012; however, we did receive several complaints and contacted the property owners to rectify the problem. All stormwater issues were corrected and no violations or citations were issued in 2012. Oklahoma County had 2 stormwater violations in 2013. One violation was during the construction of a commercial store and the other violation was during the construction of a single-family home. Both violations were corrected by the property owners and no citations were issued.

CRUTCHO PARK PROJECT

Status: **Ongoing**

Oklahoma County is in the process of purchasing homes in the Crutcho Park Subdivision, located in the floodway and demolishing the homes. The empty lots will be restored and remain open space in perpetuity. This is a voluntary program to remove residents from harms way and reduce flood losses. Oklahoma County has demolished 63 residences at this time; as various phases of the project are approved and implemented, it is the goal to remove approximately 105 homes from the floodway. The removal of these homes is a substantial benefit to Crutcho Creek, which is an impaired water body. It is possible the water quality of Crutcho Creek could improve dramatically, with the removal of these homes.

TRAINING

Status: **Ongoing**

Erik Brandt has been to several training events throughout the years. He has received training by attending the Stream Team Conference, OFMA Annual Conference, annual stormwater conference in Waco, TX, Santa Fe, NM, and Oklahoma City, OK, Central Oklahoma Stormwater Alliance workshop, and other events that are put on in the local area. Oklahoma County will continue to receive training and provide training to other county staff as the program continues to grow.

MINIMUM CONTROL MEASURE 4 – CONSTRUCTION SITE STORM WATER CONTROL

INSPECTION

Status: **Ongoing**

Oklahoma County reviews all plats during the three phases of the platting process. Oklahoma County staff will make visits to the development site during the preliminary plat phase to make sure that all runoff is contained to the site and all best management practices are followed. Once the preliminary plat is approved staff continues to follow the project during the final plat phase. Once the final plat phase is complete staff will

conduct a final inspection to make sure all roads are constructed to county standards and ensure all storm water controls are in place.

Once the final plat phase is approved by the Board of County Commissioners the developer is then able to sell lots and obtain building permits. Oklahoma County staff continues the inspection process during the construction of individual homes from the foundation inspection until the Certificate of Occupancy is obtained. The foundation inspection includes storm water control best management practices are installed. The final inspection, conducted prior to issuance of the certificate of occupancy, includes inspecting the lots for proper grading and installation of sod, hydromulch, or grass to control storm water runoff from the site.

Oklahoma County issued two stormwater permits during 2012. The first permit was issued in July of 2012 for a church that is being constructed at 5300 NW 220th St. The total ground area that is being disturbed is 13 acres. We look for this project to be complete in 2013 or early 2014. Once the project is complete staff will go to do a final inspection to make sure all stormwater elements have been installed and functioning properly. The second permit was issued in October of 2012 for the construction of a residence with some additional clearing on a 40 acre tract. Property owner cleared approximately 10 acres for the construction of the residence plus additional improvements (pond construction, future location of stables, and general clearing).

Oklahoma County issued two stormwater permits during 2013. The first permit was issued in January of 2013 for a residence that was near a floodplain. The total ground area being disturbed was a little over 1 acre. The residence was complete in October 2013 and all stormwater devices were installed and the permit was closed with no issue. The second permit was for an electrical warehouse in the stockyards area. The building is complete but there are some additional construction and stormwater detention that is being done at this time. At the time of this document all work has not been completed and Oklahoma County staff will continue to oversee the project until it is complete.

ENFORCEMENT

Status: **Ongoing**

Oklahoma County enforces its storm water regulation with the help of the Oklahoma Department of Environmental Quality. Oklahoma County will enforce the regulation on any project in the unincorporated areas of Oklahoma County. We also investigate citizen complaints. We have had a few complaints from citizens in unincorporated Oklahoma County; most of the complaints were resolved before any citations were written. Oklahoma County issued 5 stormwater violations that were construction related in 2011. All 5 issues were resolved with the property owners and no citations were issued. Oklahoma County did not issue any stormwater violations in 2012; however, we did receive several complaints and contacted the property owners to rectify the problem. All stormwater issues were corrected and no violations or citations were issued in 2012. We had 2 stormwater violations that were construction related in 2013. One was a

commercial activity on Waterloo Rd. and the other was a residential activity in Stone Valley Ranch. These stormwater violations were resolved without the issuance of a citation.

MINIMUM CONTROL MEASURE 5 – POST CONSTRUCTION STORM WATER MANAGEMENT

INSPECTION

Status: **Ongoing**

Oklahoma County reviews all plats during the three phases of the platting process. Oklahoma County staff will conduct visits to the development site during the preliminary plat phase to make sure that all runoff is contained to the site and all best management practices are followed. Once the preliminary plat is approved staff continues to follow the project during the final plat phase. Once the final plat phase is complete staff will conduct a final inspection to ensure all roads are constructed to county standards and to make ensure that all stormwater controls are in place.

Once the final plat phase is approved by the Board of County Commissioners the developer is then able to sell lots and obtain building permits. Oklahoma County staff continues the inspection process during the construction of individual homes from the foundation inspection until the Certificate of Occupancy is obtained. The foundation inspection includes storm water runoff best management practices are in place to control storm water runoff. The final inspection, conducted prior to issuance of the certificate of occupancy, includes proper grading and sod, hydromulch, or grass is in place to control storm water runoff from the site.

ENFORCEMENT

Status: **Ongoing**

Oklahoma County enforces its stormwater regulation with the help of the Oklahoma Department of Environmental Quality. Oklahoma County will enforce the regulation on any project in the unincorporated parts of Oklahoma County; this includes the ability to issue citations, if warranted. We also investigate complaints from citizens.

MINIMUM CONTROL MEASURE 6 – POLLUTION PREVENTION & GOOD HOUSEKEEPING

Household Hazardous Waste Collection

Status: **Complete**

Oklahoma County worked with Midwest City and other communities before the MS4 program was initiated, under the umbrella of COMEA. COMEA disbanded in 2007; Midwest City took over the program. Oklahoma County is partnering with Midwest City so residents of unincorporated Oklahoma County can dispose of household hazardous waste at the Midwest City facility. In 2008 Oklahoma County residents dropped off 712.6 pounds of household hazardous waste. In 2009 Oklahoma County residents

dropped off 812.2 pounds of household hazardous waste. In 2010 Oklahoma County residents dropped off 1,140 pounds of household hazardous waste. In 2011 Oklahoma County residents dropped off 1,022 pounds of household hazardous waste. Oklahoma County will continue our work with Midwest City in the future. In 2012, Oklahoma County residents dropped off 953.8 pounds of household hazardous waste. In 2013, Oklahoma County residents dropped off 1,495.9 pounds of household hazardous waste.

ENFORCEMENT

Status: **Ongoing**

Oklahoma County enforces its stormwater regulation with the help of the Oklahoma Department of Environmental Quality. Oklahoma County will enforce the regulation on any project in the unincorporated parts of Oklahoma County. We also investigate complaints from citizens. We have had a few complaints from citizens in unincorporated Oklahoma County and those complaints were resolved before any citations were written. We have called on assistance from ODEQ on a couple of occasions and those issues were resolved.

TRAINING

Status: **Ongoing**

Staff has conducted training of County Road crews and County Commissioners from each County Commissioner district about the County's new regulations and the impact County activities have on water quality. We have gone over the basics of stormwater quality and how road crews and citizens can help prevent pollution. We have had road crews and commissioners watch videos explaining the affects of water pollution and what road crews and citizens can do to keep stormwater runoff to a minimum.

FUTURE ACTIVITES FOR THE OKLAHOMA COUNTY STORMWATER PLAN

ODEQ audited Oklahoma County's Stormwater Program and made some recommendations regarding how to improve the program. ODEQ recommended that Oklahoma County establish a method to document pollutant reduction across a few areas of the program. ODEQ also recommended that we continue to develop Minimum Control Measure 5 – Post Construction Management in New Development and Redevelopment. Oklahoma County has been and will continue to look into strengthening these areas of our current plan.

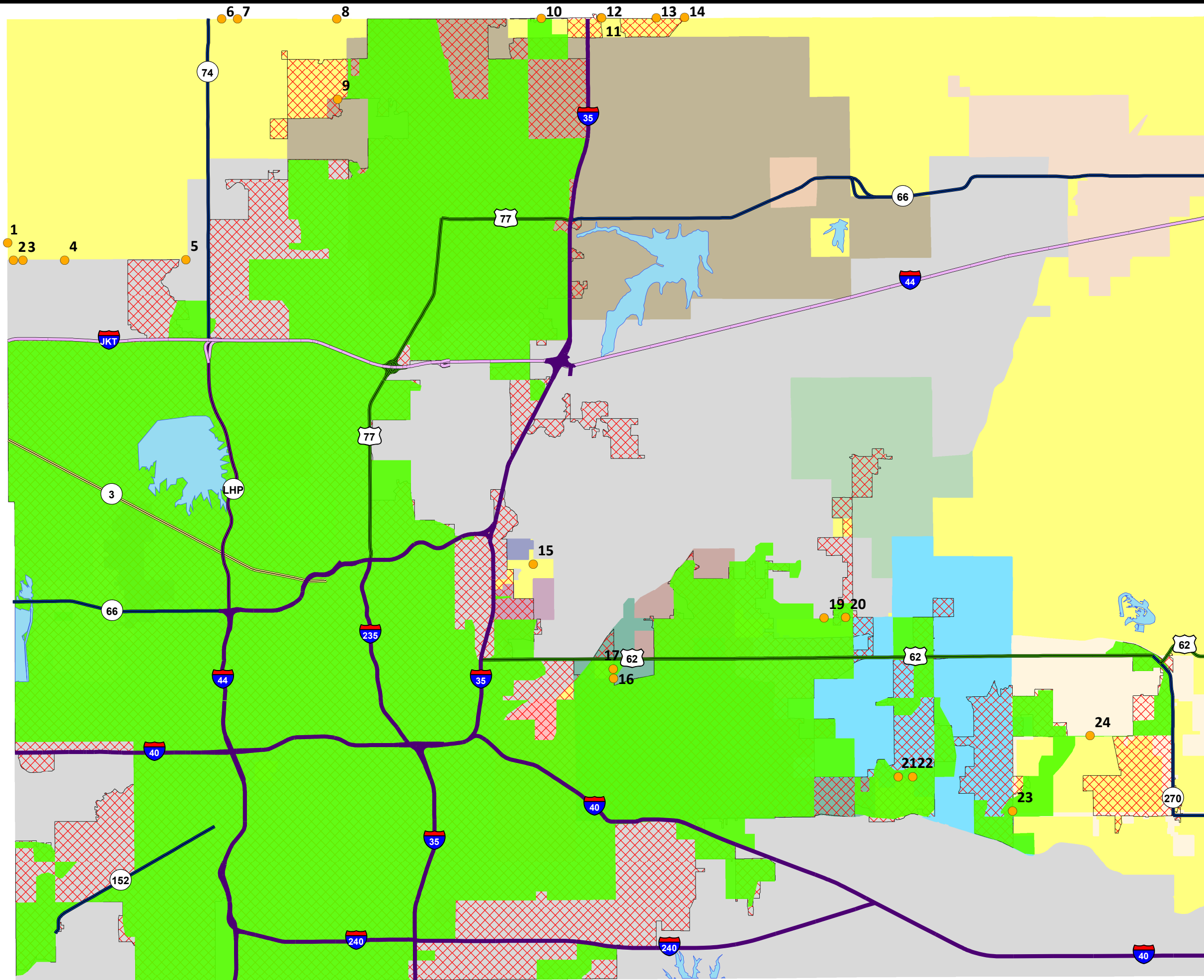
As the 2010 Census is wrapping up and population numbers start to be disseminated to local governments, Oklahoma County is concerned about the urbanized area expanding into the unincorporated areas of Oklahoma County. Oklahoma County planned for the possible expansion of the urbanized area by examining and adding some dry weather screening points in the northwest part of Oklahoma County.

Oklahoma County is also awaiting the possible changes that may need to be made in the next five year general permit authorization that, to date, have not been announced.

Annual Stormwater Report

There have been discussions concerning some additional responsibilities being added to Phase II entities. These additional responsibilities, in conjunction with the possible expansion of the urbanized area, could prove challenging for Oklahoma County's future storm water plan.

Oklahoma County Stormwater Map



Legend

Possible Monitoring Points

- Orange dot

Urbanized Areas

- 2000 Urbanized Area (Green)
- 2010 Urbanized Area (Red cross-hatch)

Oklahoma County Cities

- Arcadia (Light brown)
- Bethany (Light pink)
- Choctaw (Light blue)
- Del City (Light red)
- Edmond (Light grey)
- Forest Park (Light purple)
- Harrah (Light yellow)
- Jones (Light green)
- Lake Aluma (Dark blue)
- Luther (Light tan)
- Midwest City (Dark green)
- Nichols Hills (Light green)
- Nicoma Park (Light purple)
- Oklahoma City (Light grey)
- Smith Village (Light pink)
- Spencer (Light brown)
- The Village (Light green)
- Unincorporated (Light yellow)
- Valley Brook (Light purple)
- Warr Acres (Light purple)
- Woodlawn Park (Light green)

